



Maxus T90ev

2022 on

MT-TALO-22-3583

If you require any help with installation please call us on +44 (0)1789 339 339

or eMail to info@eagle4x4.com

1) Please check you have all the required parts before starting installation:

- 1 x base plate and actuator
- 1 x wiring loom
- 8-10 x cable ties
- 2 x scotch locks - please note that soldering is recommended
- 1 x convoluted tubing - to protect wiring harness between tailgate and vehicle body

2) You will need the following tools:

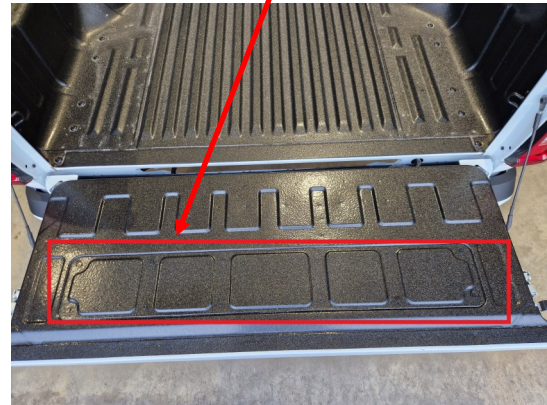
- Phillips bits (to remove tailgate panel)
- Soldering equipment (optional)
- Pliers (to crimp scotch lock wire connectors - *optional*)
- Long shaft Torx screw driver (to remove and replace tailgate handle screws)
- Insulating tape



- 3)** You may find it convenient to hold the tailgate handle in position using decorators tape



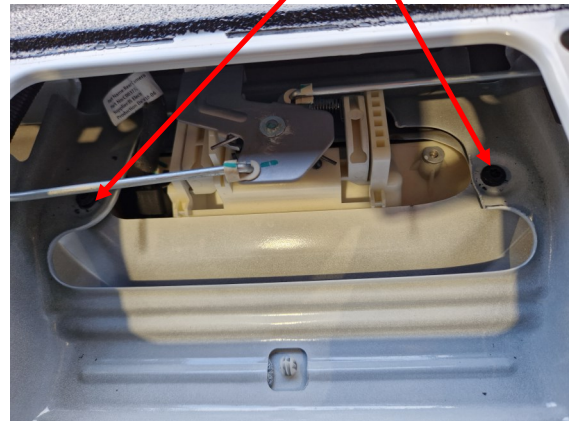
- 4)** Open tailgate; undo 12 screws to remove metal panel as highlighted



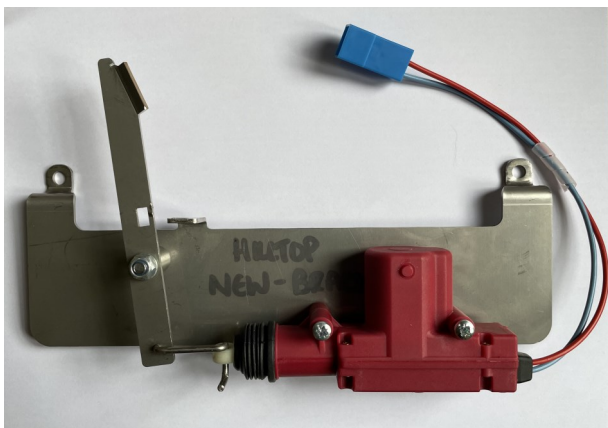
- 5)** Access the tailgate handle screws through the holes above the screws using a long Torx screwdriver



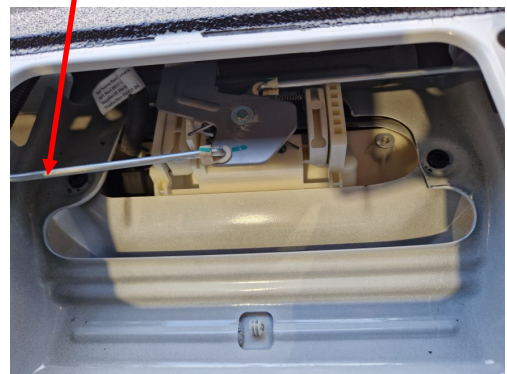
- 6)** Remove the two screws that hold the tailgate handle in place



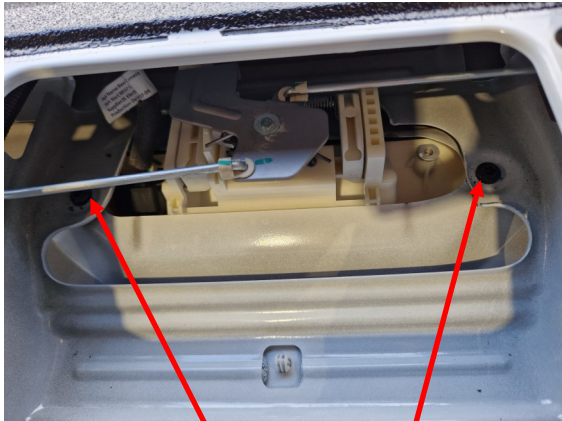
- 7)** Place the actuator arm in the unlocked position



- 8)** Position plate and actuator with the fixing legs over the tailgate handle holes, threading the actuator arm underneath the tailgate lock rod



- 9)** Replace and tighten the tailgate handle screws to secure the base plate



Picture should show lock in place

- 10)** Feed the wiring loom into the tailgate and attach the loom to the actuator

Red to Red and Black to Blue



- 11)** Thread the convoluted tube over the wiring loom. Position to cover the gap between tailgate and body. Secure with insulation tape at both ends



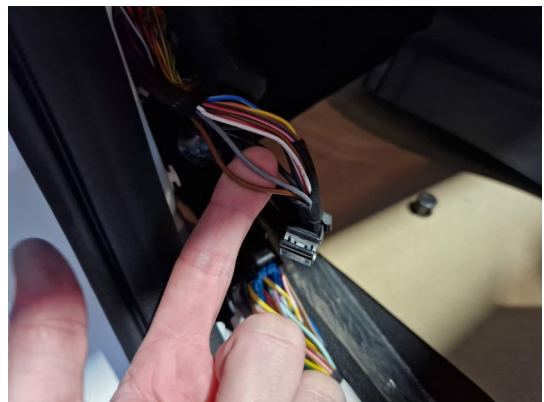
- 12)** Remove rear door sill guard on



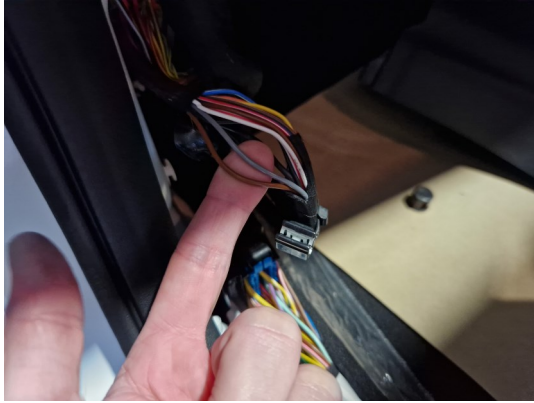
- 13)** Route the cable from the tailgate along the chassis, into the body and to the kick plate



- 14)** Locate the brown and grey cable on the vehicles wiring harness



15) Solder the wiring loom into vehicle electrics. You may use the Scotch Locks provided but soldering is recommended. Please note that we advise that any connection is appropriately and securely covered with suitable insulation material



Check polarity is correct

Eagle1 Lock	Vehicle Loom
Red	Brown
Black	Blue Grey

16) Test the kit by clicking the central locking and checking that the tailgate locks and unlocks. Do not click continuously since the motor may over heat and fail. If everything works, replace the door sill guard and tailgate cover

PLEASE NOTE:

Eagle4x4 recommends that installation is done by a Qualified Auto Electrician. Any electrical faults due to improper installation will not be warranted by Eagle 4x4